

OWNER'S GUIDE

BT 390



 **PHIATON**



WIRELESS HEADPHONES

Thank you for purchasing PHIATON BT 390.

- Please follow the directions, and read the guidelines carefully before use. Please keep the owner's guide for future reference.
- Some functions of the BT 390 may not be available when it is paired with certain devices.
- The specifications are subject to change without prior notice for quality improvement.

CONTENTS

1. SAFETY AND GENERAL INFORMATION
2. COMPONENTS & FEATURES
3. CHARGING
4. POWER ON/OFF AND HEADPHONE CONNECTION WAITING MODE
5. PAIRING WITH A 'BLUETOOTH DEVICE'
6. MULTIPOINT CONNECTION
7. LISTENING TO MUSIC (PLAY & CONTROL)
8. ACCEPTING / MAKING A CALL WHILE PLAYING MUSIC
9. USING THE CALL FUNCTION
10. BATTERY USE TIME
11. MISCELLANEOUS FEATURES
12. CONNECTING AND USING THE AUDIO CABLE
13. SPECIFICATIONS
14. PRODUCT SYMPTOMS AND TROUBLESHOOTING
15. FCC COMPLIANCE INFORMATION
16. CE COMPLIANCE INFORMATION

English

한국어

Deutsch

Français

Español

русский

中國語

1. SAFETY AND GENERAL INFORMATION

- 1) Use a standard USB charging cable (included), with or without a charging adapter.
(5V, over 500mA) * Adapter Not Included
- 2) Lower the volume prior to listening to audio to prevent potential damage to eardrums caused by sudden loud sound.
- 3) Listening to loud music for extended periods of time may cause hearing damage.
- 4) Do not store the device in places with a temperature higher than 113 °F/ 45 °C.
- 5) Keep the device dry. If the device becomes wet, turn the power off, dry the device with a dry towel and contact Phiaton Customer Service for an inspection. (For more information, refer to the contact us page within our website – phiaton.com)
- 6) Do not attempt to disassemble, modify or repair the device.
- 7) Do not cause shock to the device.
- 8) Keep out of the reach of children and pets.
- 9) Do not tug on cords or touch power plugs with wet hands.
- 10) Do not use the device nearby microwave ovens or wireless LAN adaptors.
- 11) When the product is not being used, set the device power switch to 'OFF'.
- 12) When cleaning the device, use a clean dry cloth to wipe the device clean. (Do not use solvents)
- 13) When storing the headphones, the ear pads may become damaged due to sweat, moisture and makeup on the ear pads. Use a slightly wet towel or tissue and wipe the device before storing.
- 14) Replacement ear pads can be purchased from Phiaton Customer Service.
- 15) Use while driving or walking will prevent outside noise, such as signals or alarms, from being heard and may be dangerous to yourself and others. Heed caution during use.
- 16) The radio waves of this device may affect electronic medical devices. If you use an electronic medical device, consult your doctor or medical device company before you use this device.

※ Use the BT 390 only for its intended purposes.

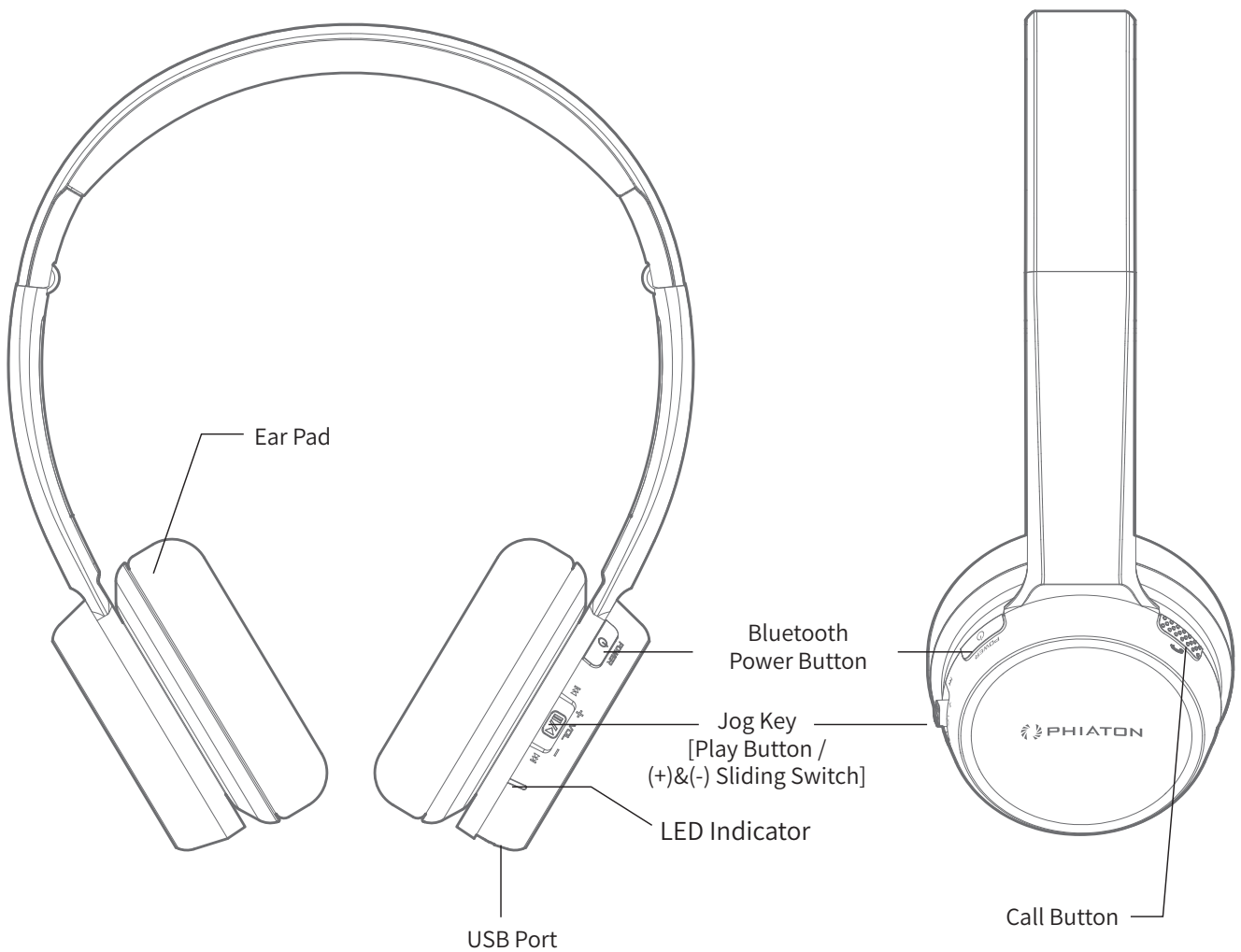
※ This device cannot be used for purposes related to human safety as it may cause radio interference during operation.

2. COMPONENTS & FEATURES

1) COMPONENTS

- BT 390
- USB Charging Cable
- Audio Cable (1.0 m, micro USB Plug to 3.5 mm Plug)
- Quick Guide
- Warranty Card

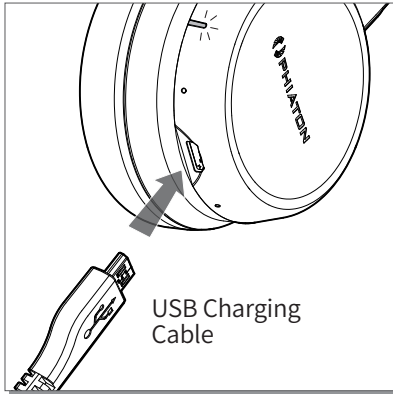
2) FEATURES



3. CHARGING

The device may not be charged upon purchase and must first be charged before use.

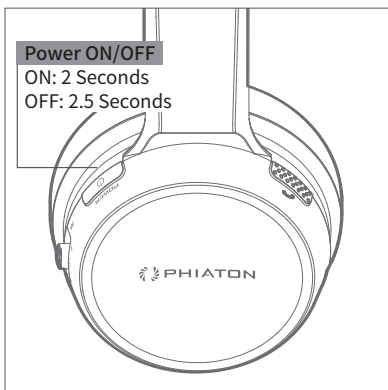
- 1) Connect the provided USB charging cable (micro USB 5pin connector) to BT 390.
- 2) Connect the provided USB charging cable with a computer (laptop) or you may also use a separately purchased USB adapter (rating: 5V/over 500mA) to begin charging.



Operation	LED Indicator
Charging	Red light
Charging complete	Blue light

- This device has a built-in battery, so it will begin charging automatically when you connect the charging cable.

4. POWER ON/OFF AND EARPHONE CONNECTION WAITING MODE



1) Power ON/OFF

- Press and hold the 'POWER' Button for 2 seconds to turn the power on.
- Press and hold the POWER Button for 2.5 seconds to turn the power off.

※ Pairing mode will start once the power is turned on for the first time after purchase.

Status	Operation	LED Indicator	Voice Guidance
ON	Press and hold the POWER Button for 2 seconds	After Purple light, Blue light blinks	Power on
OFF	Press and hold the POWER Button for 2.5 seconds	Red light blinks 5 times	Power off

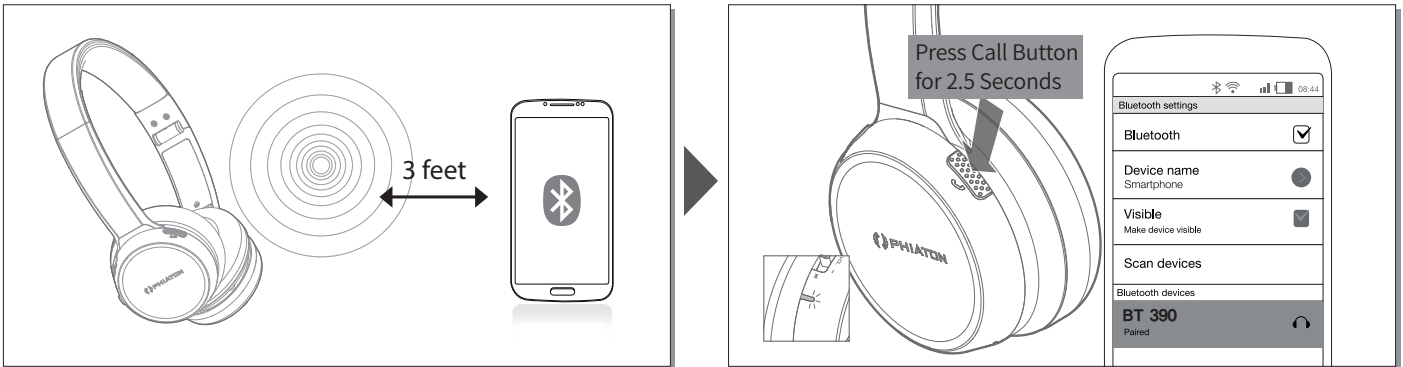
chase.

2) Connection Waiting Mode

- When power is turned on, 'Connection Waiting Mode' will start if 'Pairing Mode' cannot be entered or the headphones cannot connect with 'Bluetooth Device'.
- If the 'Bluetooth Device' is not connected within 5 minutes in 'Connection Waiting Mode', the headphones will automatically turn off.

Status	LED Indicator
Connection Waiting Mode	Blue light blinks twice in 6 second intervals

5. PAIRING WITH A 'BLUETOOTH DEVICE'



1) Pairing

- Turn on the Bluetooth feature with the 'Bluetooth Device' you want to connect with the BT 390.
- Place the BT 390 within 3 feet of the 'Bluetooth Device' you want to connect.
- Press and hold the CALL Button for over 2.5 seconds with the BT 390 power on to enter Pairing Mode.

Status	LED Indicator	Voice Guidance
Pairing Mode	Blue and Red light alternately blinks	Pairing Mode activated

- Within the 'Bluetooth Device' you want to connect, search/select 'BT 390'.
- ※ If the 'Bluetooth Device' requires a PIN CODE or password, enter '0000'.
- Use the headphones to play music or connect a call.

Operation	LED Indicator	Voice Guidance
Connection success	After Purple light blinks twice, Blue light blinks once in 6 second intervals	Device connected

2) Re-connecting a Disconnected Device

① Auto Connection

- Once the device has been paired with a 'Bluetooth Device' it will automatically be connected to a previously connected device once the BT 390 power is turned on.
- If Bluetooth becomes disconnected as the discover range between the 'Bluetooth Device' and the BT 390 is exceeded, then Bluetooth will not be automatically re-connected. When you are back within the discover range (33 feet), you must then connect manually.

② Manual Connection

- When having entered 'Connection Waiting Mode' during connection.
- Press the CALL Button or the PLAY Button on the headphone to connect.
- The BT 390 will also be connected if you select 'BT 390' from the device search list within your 'Bluetooth Device'.

3) Checkpoints Upon Pairing

- Check to see whether the Bluetooth feature is activated within the 'Bluetooth Device' you want to connect.
- When selecting the connection device, connect by selecting stereo headset device.
Music cannot be played when connected through mono headset.

※ In order to properly use the Bluetooth feature of this device, the profile (A2DP, HSP, HFP and AVRCP) of the 'Bluetooth Device' you are trying to connect must support the profile of this device.

* A2DP - Advanced Audio Distribution Profile, HSP - Headset Profile, HFP – Hands Free Profile, AVRCP - Audio / Video Remote Control Profile

※ The device will not operate properly if the profiles are not supported equally. Even when the profiles are supported equally, some features may not properly operate depending on the 'Bluetooth Device' specifications. To check the detail specifications of this headphone's profile, refer to '13. SPECIFICATIONS'. For more information, please visit phiaton.com or contact Phiaton customer service.

6. MULTIPOINT CONNECTION

1) What is 'Multipoint Connection'?

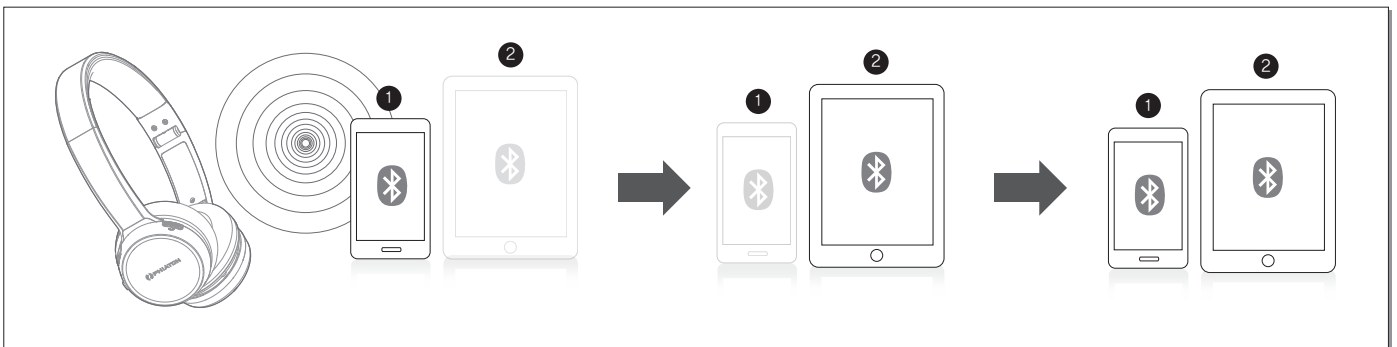
- This is a feature where BT 390's user can simultaneously connect two Bluetooth devices.

2) Multipoint Connecting

- Turn on the Bluetooth feature within the two 'Bluetooth Devices' you want to connect with BT 390.
- Refer to 5. PAIRING WITH A 'BLUETOOTH DEVICE' to pair the first device with the BT 390.
- Press and hold the CALL Button again for 2.5 seconds to enter 'Pairing Mode'.
(Here, the first device becomes disconnected.)
- Once 'Pairing Mode' has been entered, pair the second device.
- Within the first 'Bluetooth Device' you want to connect, select 'BT 390' again.
- Now, both of the 'Bluetooth Devices' will be connected simultaneously, and now the 'BT 390' will control the secondly paired device.

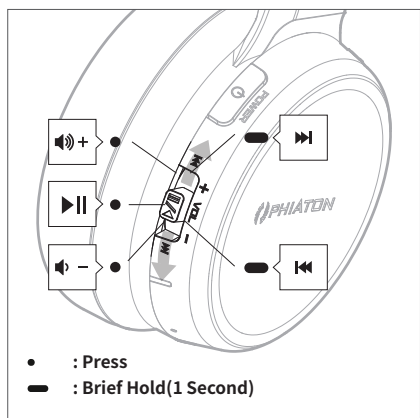
※ Sleep Mode will be entered when devices are not connected within two minutes. When trying to connect a device while in Sleep Mode, pressing any button will re-enter 'Connection Waiting Mode' where connection is possible.

※ When the BT 390 power is turned off and back on, only the second paired device will automatically be connected. When the first paired device is reconnected, then both of the devices will remain connected.



- ※ Upon Multipoint Connection, the features operated within BT 390 usually operate within the second paired device. (When using the first paired device, it is possible to operate the device from BT 390.)
- ※ When using Multipoint Connection, the order of the paired devices may change. To change the order, re-connect the device you usually use.

7. LISTENING TO MUSIC (PLAY & CONTROL)



1) Playing Music

- Shortly press the PLAY Button once to play music from the 'Bluetooth Device'.
- While music is playing, shortly press the PLAY Button to pause the playing music. The music will be played from the paused point when playing music again.

* SBC(Sub Band Codec) is default audio codec installed for any 'Bluetooth Device'.

2) Controlling Volume and Using Seek

- Slide the switch to (+) / (-) direction to control the volume.
- Slide and hold the switch to (+) / (-) direction for about 1 second to go to the next / previous song. After 1 second, the 'beep' signal tone is provided.
- Slide and hold the switch to (+) / (-) direction continuously to fast-forward / rewind the current song.

* Music can be listened to through BT 390 by directly operating your 'Bluetooth Device'.

* When the battery is completely drained, you can connect the provided audio cable to continue listening.

8. ACCEPTING / MAKING A CALL WHILE PLAYING MUSIC



1) Accepting a Call while Playing Music

- When the incoming call tone is heard through the earphones, press the CALL Button. The music will be paused and the call is connected.
- Once the call has ended, press the CALL Button to terminate the call. Once the call is terminated, the paused music will play again.

9. USING THE CALL FUNCTION

1) Accepting a Call

- When the incoming call tone is heard through the headphones, press the CALL Button. (Adjusting Call Volume: to control the call volume, slide the switch to (+) / (-) direction)

2) Ending a Call

- While on a call, shortly pressing the CALL Button to end the call.

3) Rejecting a Call

- When the incoming call tone is heard through the headphones, press and holds the CALL Button for about 1 second. (After hearing the 'beep' signal tone, the incoming call is rejected and the voice guidance "Call Ignored" is heard.)

4) Turning Mute On/Off

- While on a call, slide the switch to (-) direction for about 1 second to mute microphone. To turn back on, slide the switch to (-) direction again for about 1 second.

5) Call Waiting

- When there is another incoming call while on a call. (Supported only when having applied for this service with your telecom provider.)
- Press and hold the CALL Button for about 1 second to place the current call on call waiting and connect the second call. (Press the CALL Button again for about 1 second to switch between the waiting call and connected call.)
- Shortly press the CALL Button to end the current call and connect the second call.

6) Calling by Voice (Supported within mobile phones that support the voice command feature).

- To place a call by voice, shortly press the CALL Button and request 'call contact' while connected to the phone. This will begin voice command function.

7) Switching between the Device and Mobile Phone

- To switch the call from mobile phone to the headphone, (with the headphone Power ON) press the CALL Button for 1.5 seconds. You will be switched from mobile phone to the headphone after a beep sound. In order to switch back to mobile phone from the headphone, you will need to control from your mobile phone.

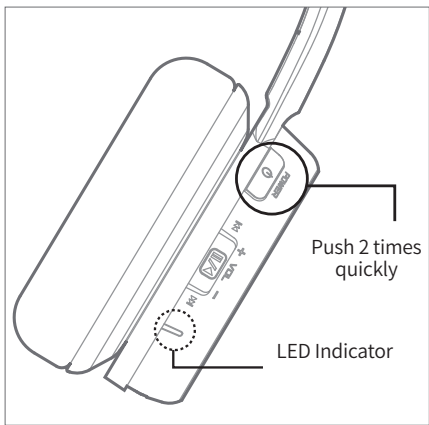
Status	LED Indicator
Incoming Bell/Outgoing Bell	Purple light blinks in 1.5 second intervals
During Call	Blue light slowly blinks every 6 seconds
When there are two calls connected	Purple light slowly blinks every 6 seconds

10. BATTERY USE TIME

Classification	Use Time
Continuous Talk Time	Max 29 hours
Continuous Music Play Time	Max 30 hours
Stand by Time	Max 630 hours
Full Charge Time	About 3.2 hours

* The above times may differ depending on the environment in which it is used.

11. MISCELLANEOUS FEATURES



1) Checking Remaining Battery

- With the power on, shortly press the POWER Button twice to display the remaining battery indicator (LED).
- For Apple iOS version 5 or above, the remaining battery is displayed at the top right side of the screen.

Remaining Battery	LED Indicator	Voice Guidance
Over 80%	Blue light lights up for 1 second	Battery is full
80% ~ 30%	Purple light lights up for 1 second	Battery is moderate
Under 30%	Red light lights up for 1 second	Battery is low
Under 3%	Red light lights up for 1 second and the alarm will sound	Please recharge

* The Battery Check feature will not operate while the battery is being charged.

* When the battery charge is under 3%, the alarm will sound.

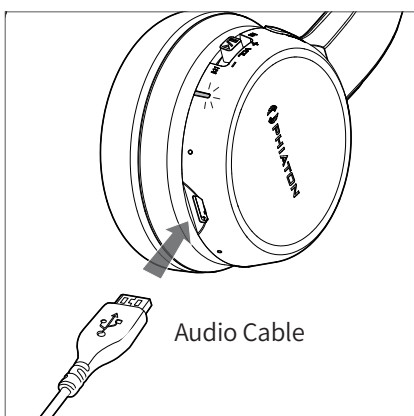
If use is continued for several minutes the battery will be completely drained, the 'Power Off' voice guidance is provided and the power will automatically turn off.

2) Resetting the Device

- To reset to factory settings, press the POWER Button and slide the switch to (+) direction simultaneously for 5 seconds simultaneously while in 'Pairing Mode'.
- This is Software reset. This will delete all of the previously paired device history.
- This method is recommended when there's issue on pairing with devices.

Operation	LED Indicator	Voice Guidance
Factory Settings	Purple light lights up twice	After 'beep' signal tone twice, "POWER ON, Pairing Mode activated"

12. CONNECTING AND USING THE AUDIO CABLE



1) BT 390 can also be used with the audio cable connected as shown in the figure.

- * When connected to a device with the provided audio cable, the Bluetooth remote features are disabled and you must use the device you are connected to answer calls and play music.

13. SPECIFICATIONS

1) Main body

- Communication Network: Bluetooth 4.1
- Output Power: Power Class 2
- Max. Communication Range: Discoverable within 10 m / 33 ft.
- Full Charging Time: 3.2 Hours
- Call Time: 29 Hours
- Music Play Time: 30 Hours
- Standby Time: 630 Hours
- Operating Frequency: 2.4 GHz (2.402 GHz ~ 2.480 GHz)
- Bluetooth Profile Support: HFP v1.6 / HSP v1.2 / A2DP v1.2 / AVRCP v1.4
- Battery: Lithium Polymer DC 3.7 V / 510 mAh
- Microphone Frequency Range: 100 ~ 4,000 Hz
- Microphone Sensitivity: -43.5 dB
- Support Echo Cancellation and Talk Noise: CVC Solution
- Operating Temperature: -5 ~ 55 °C / -41~131 °F
- Size: 174 x 144 x 65 mm (H x W x D) / 7.1 x 5.6 x 2.5 inch (H x W x D)
- Weight: 140 g (0.31 lb)

2) Headphones

- Type: Φ 40 mm Driver Units
- Sensitivity: 102 dB
- Frequency Response: 20 Hz ~ 27 kHz
- Impedance: 32 ohms

* The specifications are subject to change without prior notice for quality improvement.

14. PRODUCT SYMPTOMS AND TROUBLESHOOTING

1) The power does not turn on:

- Charge the device. If the power does not turn on even after charging, contact Phiaton Customer Service.

2) The device does not charge:

- Check whether the USB charging cable has been properly connected with the device.
- Check whether the PC power is on and that it has been properly connected.
- When using a separately purchased USB AC adaptor, check to see that it has been properly connected.

3) The device does not pair:

- Check whether the power of the 'The device does not pair' you want to connect is on.
- Check whether the Bluetooth feature within the 'Bluetooth Device' you want to connect is enabled.
- Check whether the 'Bluetooth Device' you want to connect is within the supported range.
(Pairing is supported only when within 3 feet.)
- Check whether the Bluetooth profile within the 'Bluetooth Device' is compatible.

4) Music cannot be played:

- Check whether the power of the device and 'Bluetooth Device' is on.
- Check whether music is being played within the connected 'Bluetooth Device'.
- Check whether the volume within the connected 'Bluetooth Device' is low.
- When using an extension cord, check to see that the plug is properly connected.

5) Noise is heard or the sound lags:

- Check whether there is an electronic device using the 2.4 GHz frequency band nearby the device and connected 'Bluetooth Device'.
- Check whether the connected 'Bluetooth Device' is far away from this device.
(Maximum communication range: within 33 feet.)

6) The music sound quality is low:

- If the 'Bluetooth Device' you are trying to connect with this device is accessed to HSP, change the access to A2DP.

7) The other party cannot be heard while on a call:

- Check whether the power of the 'Bluetooth Device' you want to connect is on.
- Access Bluetooth through HFP or HSP.
- Check whether the volume within the connected 'Bluetooth Device' is low.

8) Product does not operate or operation has stopped:

- Shortly press the CALL Button and slide the switch to (-) direction simultaneously.
- This is Hardware reset. Headphone power will be forced to quit but pairing history will remain.
- This method is recommended when headphone or function keys do not work.

9) The device is paired with PC/Laptop but does not work:

- PC/Laptop is equipped with various Bluetooth drivers depending on the manufacturer and it is possible it does not support BT 390.
- Please contact to PC/Laptop manufacturer to download the latest software driver or for further assistance in connecting to a 'Bluetooth Device'.

15. FCC COMPLIANCE INFORMATION

FCC ID: V2R-BT390

This device complies with part 15 of FCC Rules. Operation is subject to the following two conditions: (1) This device may not cause harmful interference, and (2) this device must accept any interference received, including interference that may cause undesired operation.

Information to the user:

NOTE: This equipment has been tested and found to comply with limits for a Class B digital device, pursuant to part 15 of the FCC Rules. These limits are designed to provide reasonable protection against harmful interference in a residential installation. This equipment generates, use and can radiate radio frequency energy and, if not installed and used in accordance with the instructions, may cause harmful interference to radio communications. However there is no guarantee that interference will not occur in a particular installation, if this equipment does cause harmful interference to radio or television reception, which can be determined by turning the equipment off and on, the user is encouraged to try the correct interference by one or more of the following measures:

- Reorient or relocate the receiving antenna.
- Increase the separation between the equipment and receiver.
- Connect the equipment into an outlet on a circuit different from that to which the receiver is connected.
- Consult the dealer or an experienced radio/TV technician for help.

CAUTION TO USER: Changes or modifications not expressly approved by the party responsible for compliance could void the user's authority to operate the equipment.

16. CE COMPLIANCE INFORMATION

Phiaton, hereby declares that this BT 390 is in compliance with the essential requirements and other relevant provisions of directive 1999/5/EC.